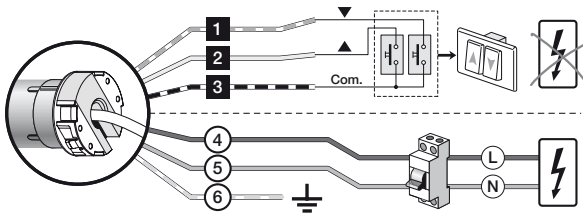


Quick start guide

Era Mat T

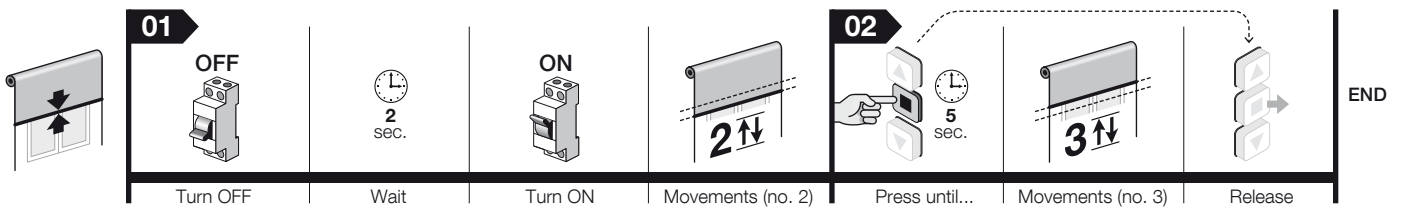
Nice

1 - Electrical connections

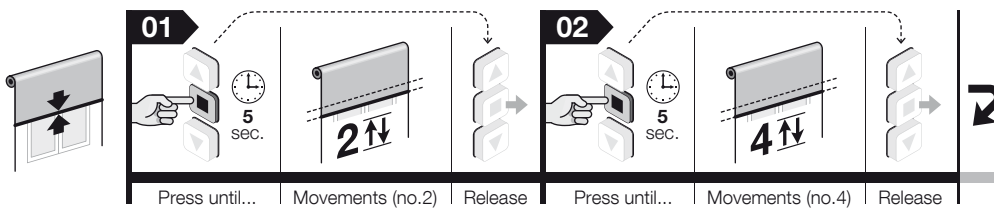


Cable	Colour	Connection
1	White-orange	Clockwise rotation pushbutton
2	White	TTBUS / Counter-clockwise rotation pushbutton
3	White-black	Common (for bus wires)
4	Brown	Supply phase
5	Blue	Neutral
6	Yellow-green	Earth

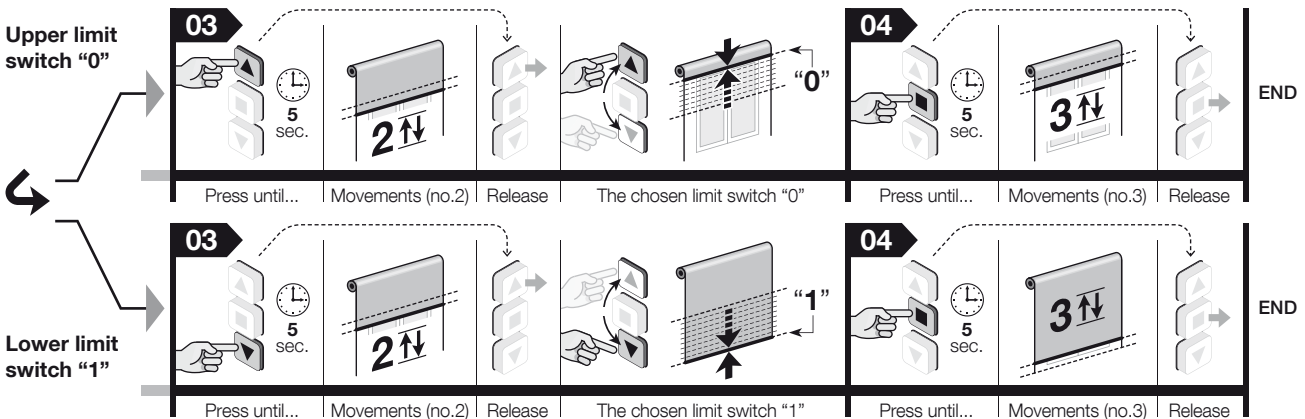
2 - Memorisation of the FIRST transmitter



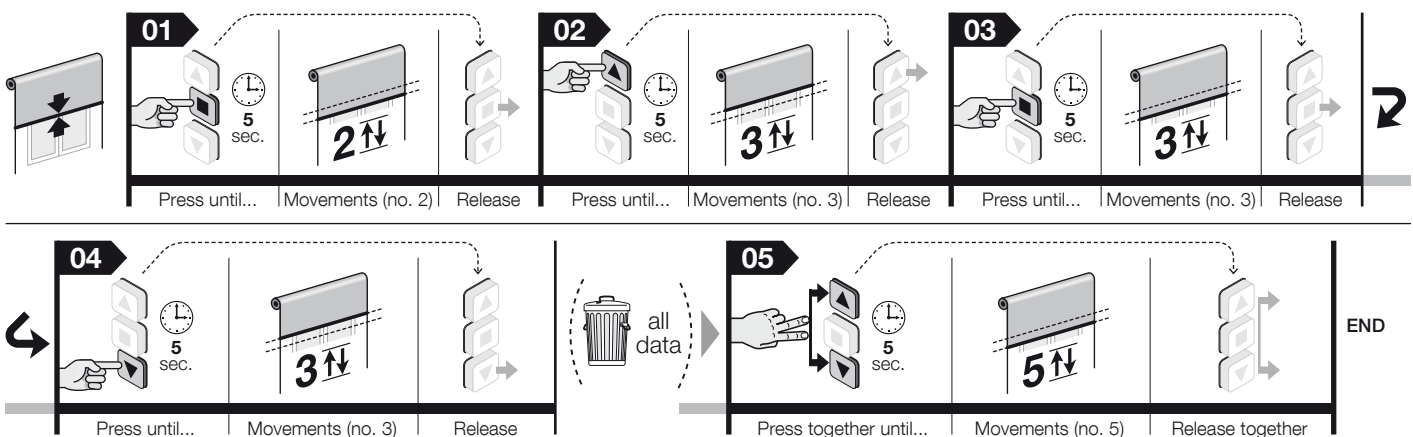
3 - Adjust limit switches "0" and "1" in MANUAL mode



Step 03-04 – You can adjust whichever limit switch you want as the first limit switch. Repeat the procedure to memorise the other limit switch.

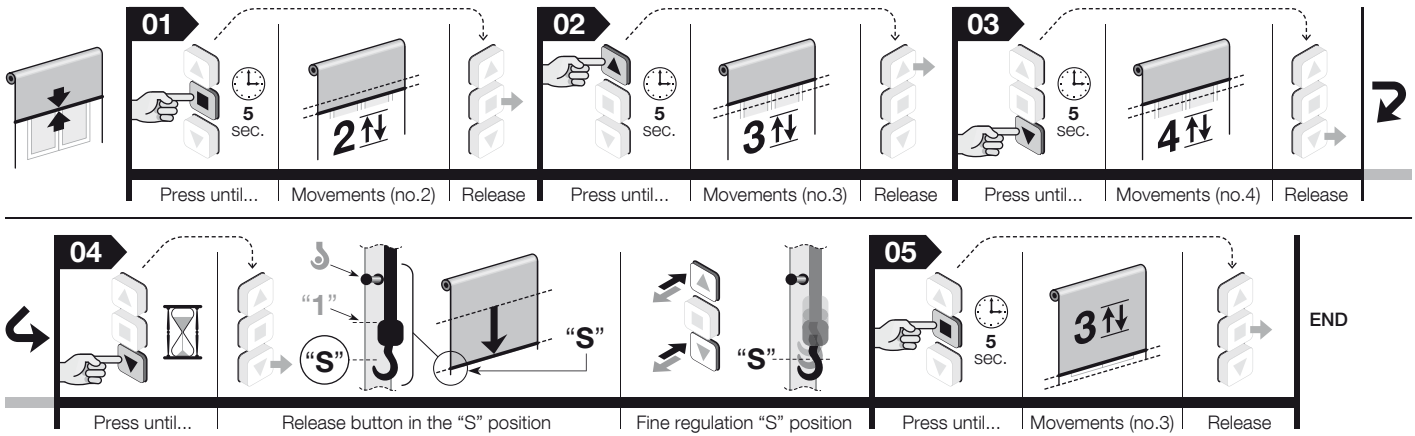


4 - Total deletion of memory

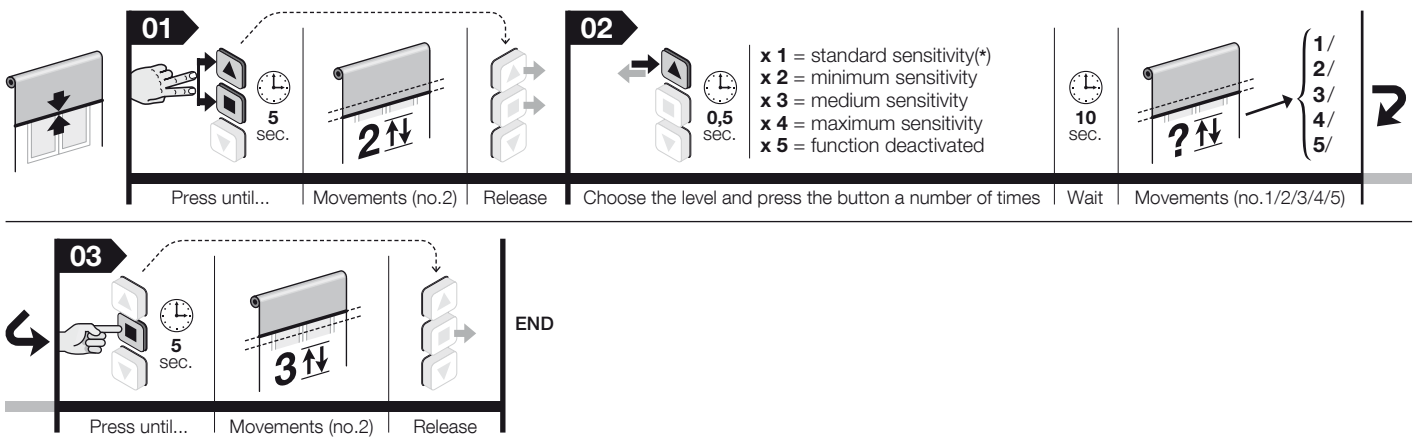


Note – When performing the procedures, at any time you can cancel it by keeping the ■ and ▼ keys pressed simultaneously for 4 seconds. Otherwise, do not press any key and wait 60 seconds for the motor to perform 6 movements.

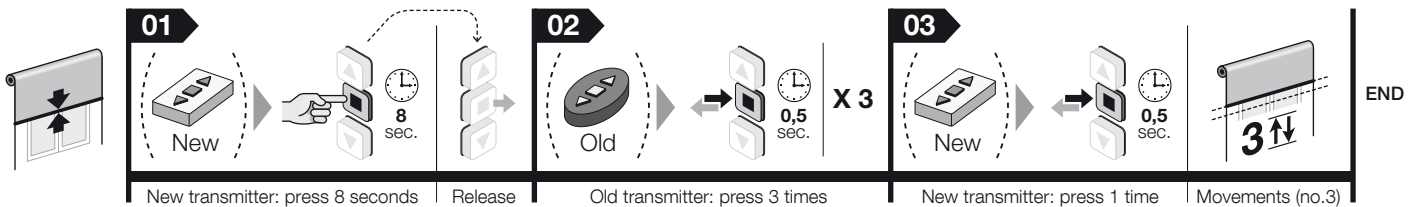
5 - "FTC" Function: tensioning the canvas when open awnings fitted with an automatic hooking and unhooking mechanism of the awning when opening (programming the "S" position)



6 - "RDC" Function: adjustment of the motor traction force when closing



7 - Memorising a SECOND (third, fourth, etc.) transmitter in "Mode I"



Note – When performing the procedures, at any time you can cancel it by keeping the ■ and ▼ keys pressed simultaneously for 4 seconds. Otherwise, do not press any key and wait 60 seconds for the motor to perform 6 movements.